

RETAIL FOR LEASE

# Woodmont Plaza Shopping Center

26200 Pacific Highway S,  
Kent, WA 98032



## THE OPPORTUNITY

Prominent box opportunity located at Woodmont Plaza in Kent, WA on Pacific Highway. Former Rite-aid consists of 22,000 + SF with large parking lot directly in front of the entrance suitable for large groups of people at one time. Strong co-tenants include Grocery Outlet, Dollar Tree, local restaurants and the Kent Police Department. Potential users include sporting goods, fitness, daycare, activities/entertainment, and other large retailers.



Tiffini Connell (206) 283-5212  
Jonathan Willett [www.wccommercialrealty.com](http://www.wccommercialrealty.com)

# WCCR

West Coast Commercial Realty

DISCLAIMER: The above information has been secured from sources believed to be reliable, however, no representations are made to its accuracy. Prospective tenants or buyers should consult their professional advisors and conduct their own independent investigation. Site plan and configuration are subject to change. Properties are subject to change in price and/or availability without notice. West Coast Commercial Realty, LLC

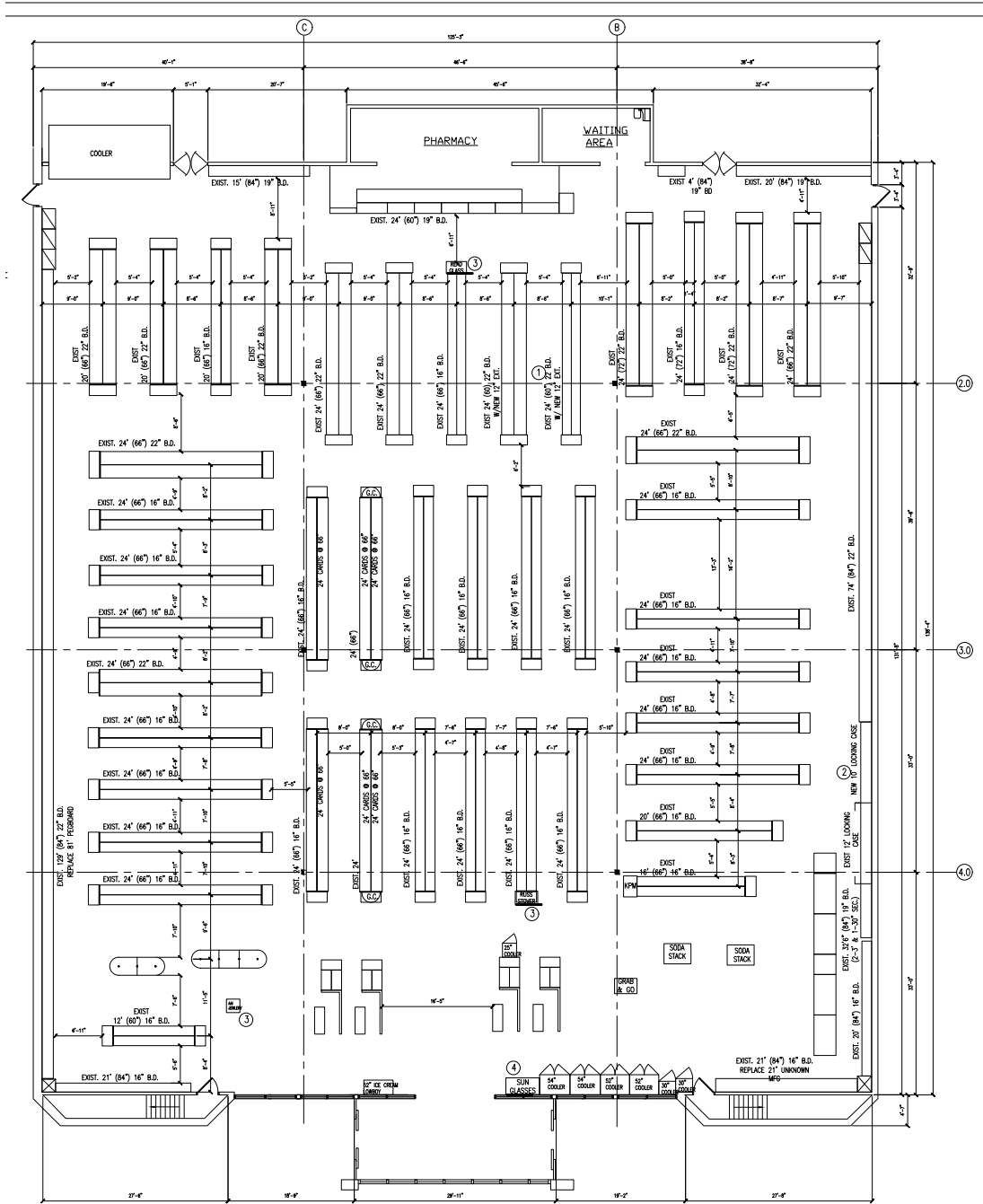
# Woodmont Plaza Shopping Center

RETAIL FOR LEASE

26200 Pacific Highway S,  
Kent, WA 98032

## FLOOR PLAN

22,210 SF AVAILABLE



Tiffini Connell (206) 283-5212  
Jonathan Willett www.wccommercialrealty.com

# WCCR

West Coast Commercial Realty

DISCLAIMER: The above information has been secured from sources believed to be reliable, however, no representations are made to its accuracy. Prospective tenants or buyers should consult their professional advisors and conduct their own independent investigation. Site plan and configuration are subject to change. Properties are subject to change in price and/or availability without notice. West Coast Commercial Realty, LLC

RETAIL FOR LEASE

# Woodmont Plaza Shopping Center

26200 Pacific Highway S,  
Kent, WA 98032



Tiffini Connell (206) 283-5212  
 Jonathan Willett www.wccommercialrealty.com

# WCCR

West Coast Commercial Realty

DISCLAIMER: The above information has been secured from sources believed to be reliable, however, no representations are made to its accuracy. Prospective tenants or buyers should consult their professional advisors and conduct their own independent investigation. Site plan and configuration are subject to change. Properties are subject to change in price and/or availability without notice. West Coast Commercial Realty, LLC

# Woodmont Plaza Shopping Center

RETAIL FOR LEASE

26200 Pacific Highway S,  
Kent, WA 98032




**Woodmont Plaza Shopping Center**  
26200 PACIFIC HWY S,  
KENT, WA 98032

## DEMOGRAPHICS

TOTAL POPULATION	
1-Mile:	18,575
3-Mile:	99,992
5-Mile:	214,613

TOTAL EMPLOYEES	
1-Mile:	2,314
3-Mile:	18,088
5-Mile:	95,582

AVERAGE HOUSEHOLD INCOME	
1-Mile:	\$88,108
3-Mile:	\$92,533
5-Mile:	\$91,312

TRAFFIC COUNTS	
	12,352 Avg Daily Volume at S 260th St and Pacific Hwy S (.15 miles from site)
	220,635 Avg Daily Volume at S 265th St and Military Rd S (.40 miles from site)



Tiffini Connell (206) 283-5212  
Jonathan Willett www.wccommercialrealty.com

# WCCR

West Coast Commercial Realty

DISCLAIMER: The above information has been secured from sources believed to be reliable, however, no representations are made to its accuracy. Prospective tenants or buyers should consult their professional advisors and conduct their own independent investigation. Site plan and configuration are subject to change. Properties are subject to change in price and/or availability without notice. West Coast Commercial Realty, LLC