

Shoreline Office @ 19909

19909 Ballinger Way NE
Shoreline, WA 98155



BUILDING FEATURES

- 2,057 SF Lower Level
- Existing Law Firm build out
- Large parking lot (47 stalls)
- Easy I-5 access, half mile to King/Snohomish Counties
- Existing office tenants in the complex include Shoreline Dental, Staton Silber, P.S., Badgley Mullins Turner, PLLC, Spain Orthodontics



Blake Taylor (206) 283-5212
www.wccommercialrealty.com

WCCR

West Coast Commercial Realty

DISCLAIMER: The above information has been secured from sources believed to be reliable, however, no representations are made to its accuracy. Prospective tenants or buyers should consult their professional advisors and conduct their own independent investigation. Site plan and configuration are subject to change. Properties are subject to change in price and/or availability without notice. West Coast Commercial Realty, LLC

RETAIL FOR LEASE

Shoreline Office @ 19909

19909 Ballinger Way NE
Shoreline, WA 98155



AVAILABLE SPACE

Floor/suite

19909 - LOWER LEVEL

RSF

Approximately SF = 2,057



Blake Taylor (206) 283-5212
www.wccommercialrealty.com

WCCR

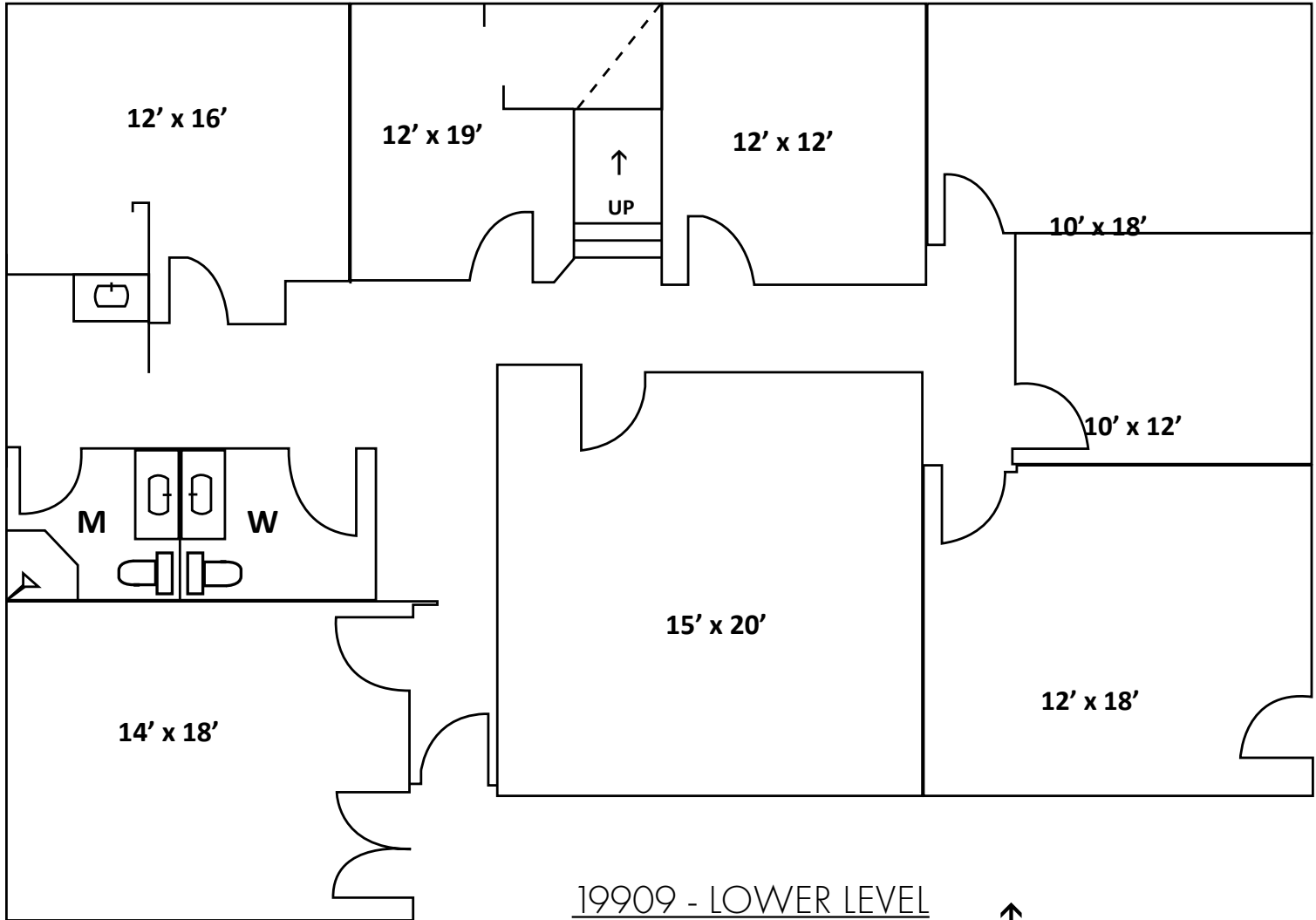
West Coast Commercial Realty

DISCLAIMER: The above information has been secured from sources believed to be reliable, however, no representations are made to its accuracy. Prospective tenants or buyers should consult their professional advisors and conduct their own independent investigation. Site plan and configuration are subject to change. Properties are subject to change in price and/or availability without notice. West Coast Commercial Realty, LLC

Shoreline Office @ 19909

19909 Ballinger Way NE
Shoreline, WA 98155

FLOOR PLAN - Lower Level
2,057 RSF (4,115 RSF total building)



19909 - LOWER LEVEL

Approximately SF = 2,057

